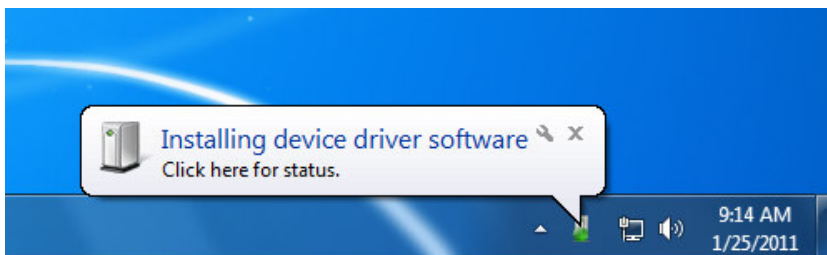
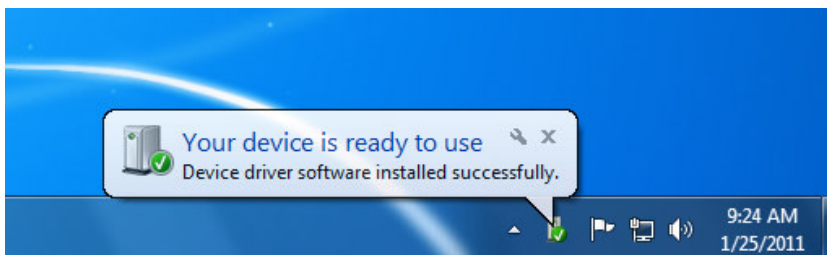


Guide to installation of the SL-28x driver and Comm28x program (Windows XP & Windows7)

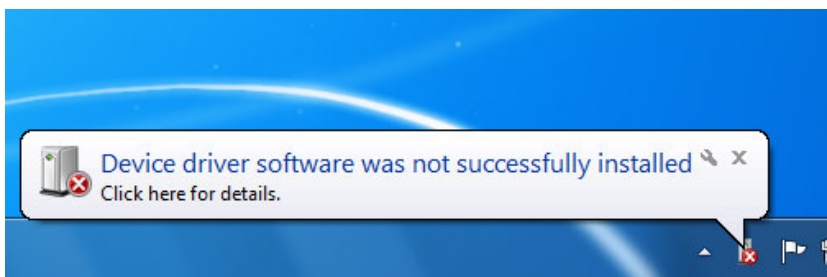
1. Connect the SL-28x reader to the USB port, you will see something like the following:



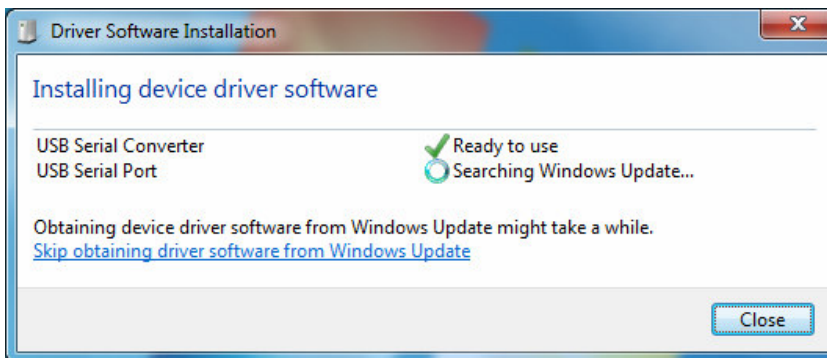
- a. In case Windows recognized your SL-28x and installed the drivers as in the picture, skip steps 8 and 9



- b. In case Windows did not recognize the SL-28x, skip step 10.



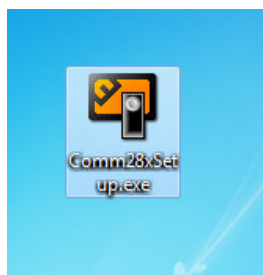
Windows can recognize the device only if you are online and the Windows internet driver update option is enabled



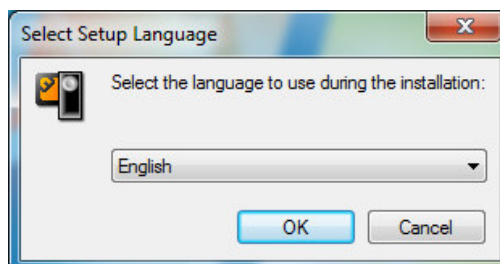
2. Download the installer file from:

<http://www.cardware.rs/download/software/Comm28xSetup.exe>

3. Start Comm28xSetup.exe



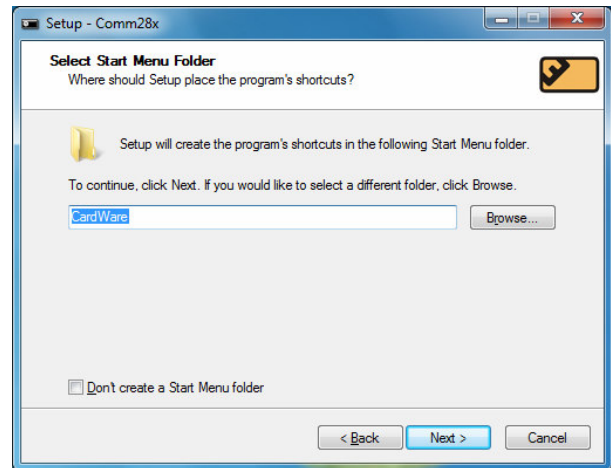
4. Choose English



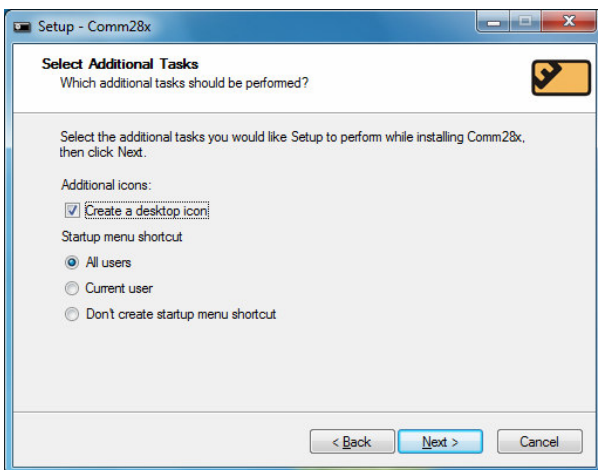
5. Continue the installation by clicking Next.



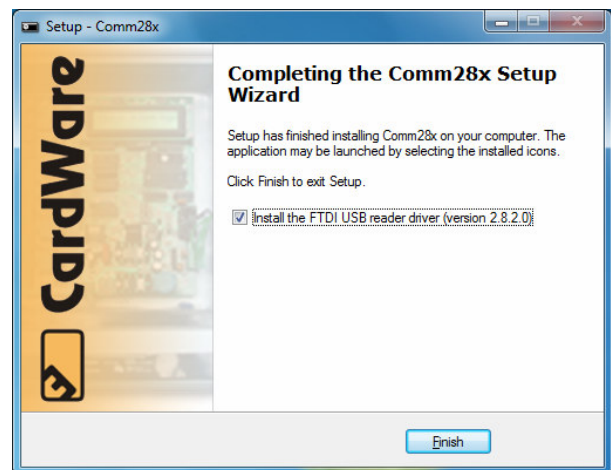
6. Select the Shortcut option in the Start Menu



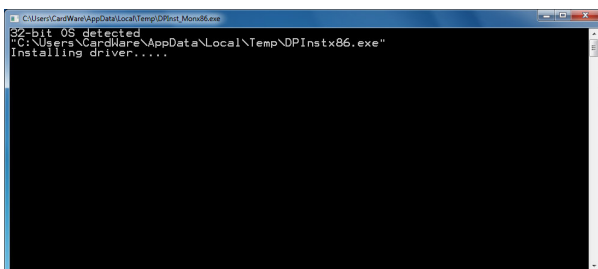
7. Select the Startup option if you plan to use the reader regularly on this PC.



8. The USB driver is installed automatically is necessary.



9. The next window shows a successfully installed driver. If this didn't appear, check if your SL-28x device is attached and try repeating the whole process of Comm28x installation.



10. Uncheck the driver installation option and click Finish.

