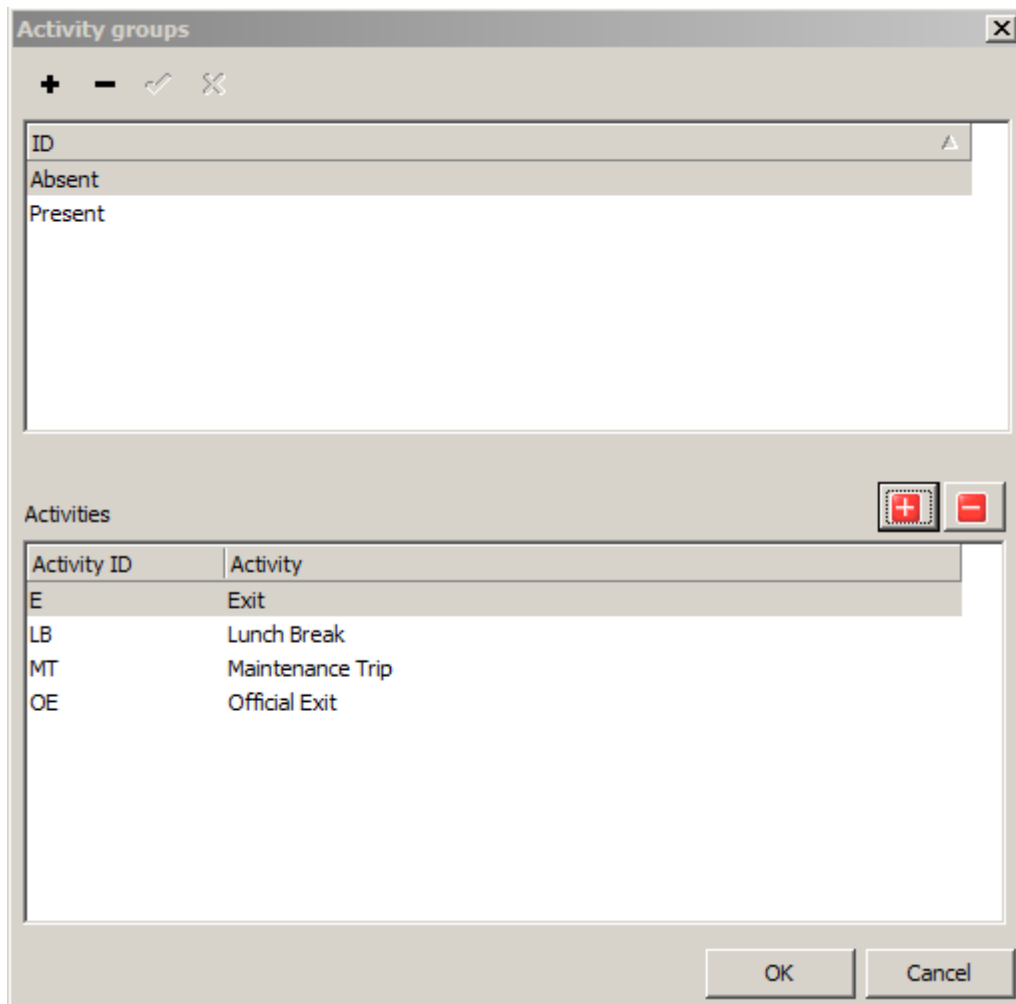


Setting up KatzeReports for using KatzePanel features

- In KatzeReports7 in **configuration->activity groups** make groups **present** and **absent** and assign which activity belongs to which group as shown below:



- Colours can be set with KatzeReports7 version from the link (or later):
<http://www.cardware.rs/download/software/KatzeReports7Setup7.22.1.194-db-3.59.exe>
- If a database update is necessary, KatzeReports7 will inform you. Contact CardWare support to receive an update script;
- In **Configuration -> Activities** set desired colours (otherwise all will be black);
- In **Configuration -> Calendars** set desired colours (otherwise all will be black);
- In **Configuration -> Day Types** set desired colours (otherwise all will be black);
- Stop CommService from the list of windows services (services.msc),
- Install the newer CommService from the link below over the older one
<http://www.cardware.rs/download/software/CommServiceSetup-1.0.27.145-Qt5.9.2-msvc2013-32bit.exe>
and start it;
- If you're installing the Windows version of KatzePanel3, the link is:
<http://www.cardware.rs/download/software/KatzePanel3Setup-3.0.2.10-Qt5.9.2-msvc2013-32bit.exe>

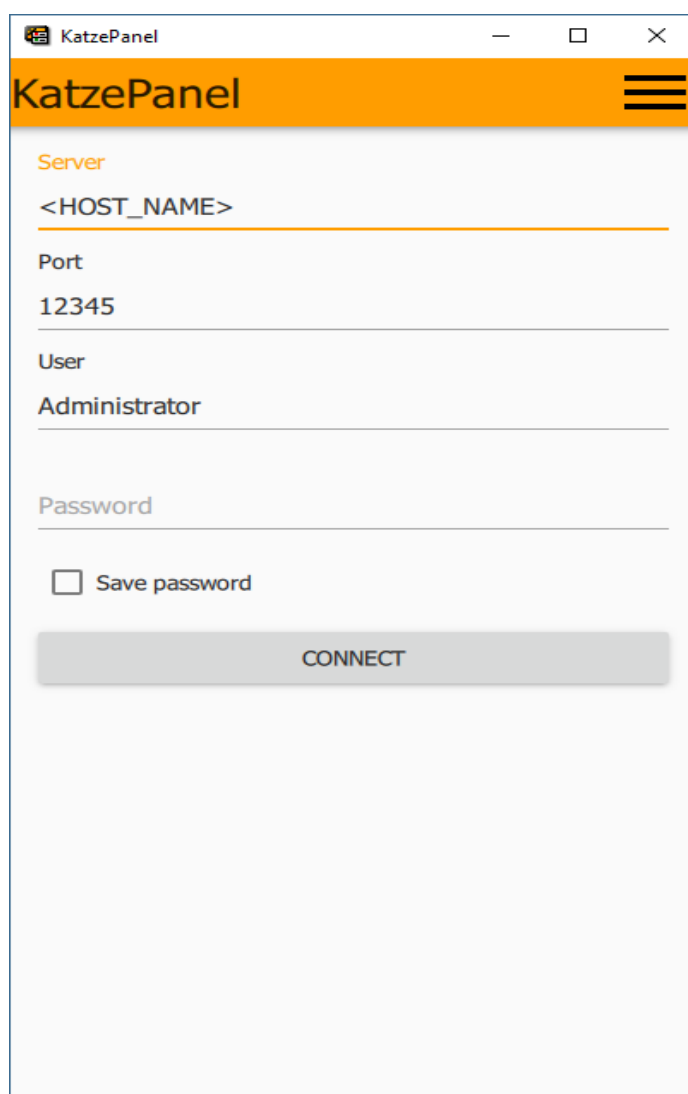
The Android version is at:

<https://play.google.com/store/apps/details?id=rs.cardware.katzepanel>

or search for KatzePanel3 on Google Play;

- The Android and Windows programs are identical and so are the parameters.
- Firewalls on the PC hosting CommService should be turned off or port 12345 enabled.
- Name and password are used as set in **KatzeReports7 File->Users** and determine the users the user can view and edit.

IF you want to access CommService from outside your company's LAN/WAN e.g. via mobile data, you can either set up a VPN, so the <HOST_NAME> or CommService IP is the same, or setup port forwarding on the router from a (static IP or DDNS, port 12345) to (CommService IP, port 12345).



The screenshot shows the KatzePanel application window. The title bar reads "KatzePanel". The main interface has an orange header with the text "KatzePanel" and a hamburger menu icon. Below the header, there are several input fields: "Server" with the placeholder "<HOST_NAME>", "Port" with the value "12345", "User" with the value "Administrator", and "Password". Below these fields is a checkbox labeled "Save password" which is currently unchecked. At the bottom of the form is a large grey button labeled "CONNECT".