

# SL-870 AUX terminal with up to 11 user defined activities

CardWare  
MIV

The SL-870 is an AUX device – it connects to SL-8x controllers and gives them additional functionality



- **Displays date and time in the top row**

The master SL-8x controller to which the SL-870 is connected sends the date and time regularly over the AUX bus. This data is displayed on the top row of the large, backlit LCD.

- **Eleven selectable activities**

Up to eleven user-definable activities can be configured. Each activity has a six-character mnemonic which is shown on the bottom row of the LCD. The currently selected activity is in the middle of the bottom row. Two more activities can be seen at any given moment, one to the left and one to the right

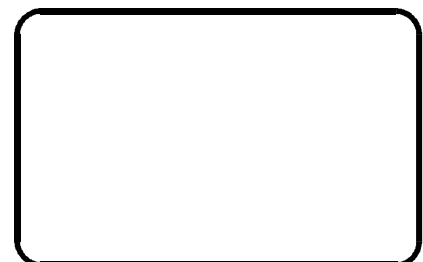
- **Quick and easy selection of activities**

The selected activity is in the middle of the bottom LCD row. If this is the desired activity for the clocking, no pressing of keys is necessary, just make a clocking with an ID badge. Otherwise, use the arrow keys to scroll through the eleven activities or press one of the shortcut keys (F1,F2,F3,F4) to access the four most common activities.

- **Configurable activities**

The eleven activity types are user definable. Each activity has a mnemonic of up to 6 characters, which is displayed on the LCD. Eight user definable characters can be used for non-English characters. The function keys F1 to F4 can be configured to point to any four most widely used activities.

- **Two versions: iButton and RF tag**

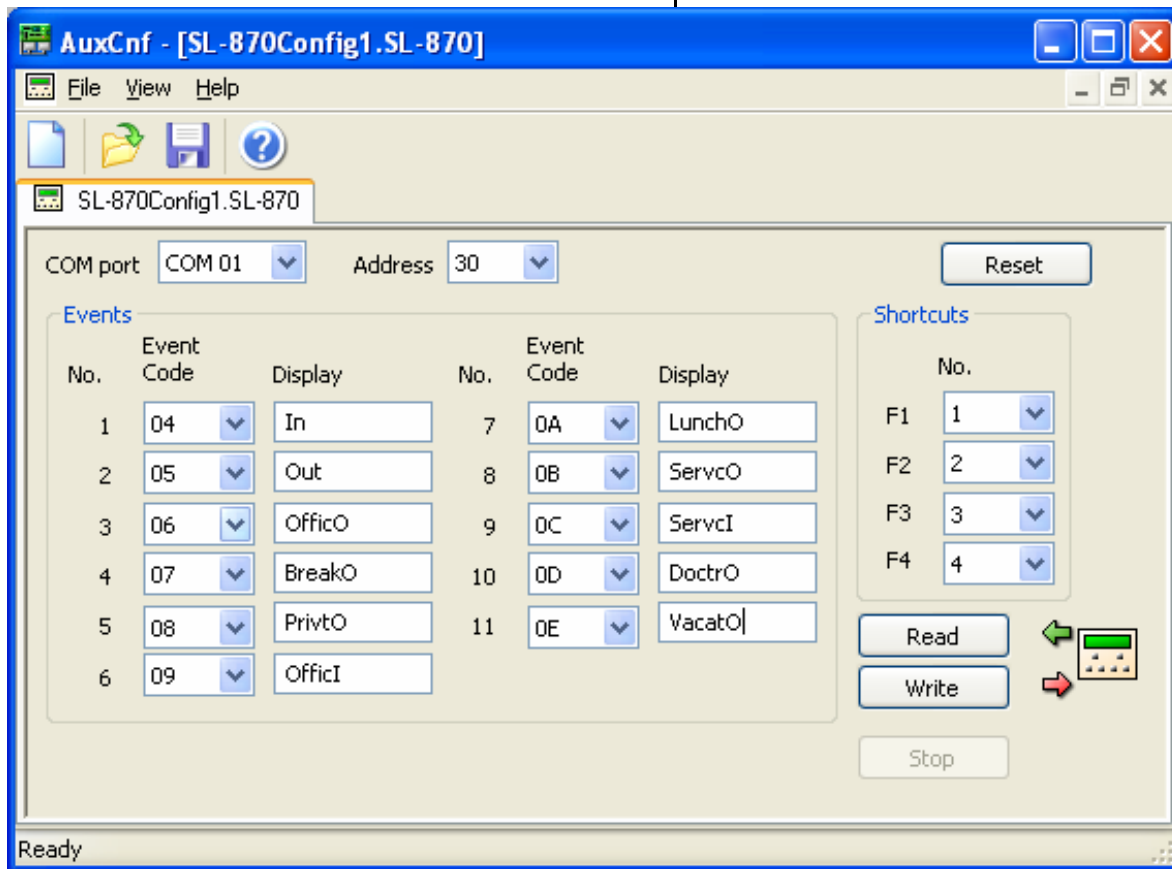


 **CardWare**

Josifa Marinkovića 44  
21000 Novi Sad, Srbija  
Tel: +381 21 443-265  
Fax: +381 21 443-516  
Mobile: +381 63 443-993  
info@cardware.co.yu  
www.cardware.co.yu

# Configuration utilities

The AuxCnf program is used to configure the SL-870. In the example below, the SL-870 is set to address 30 and is connected to an SL-84 on COM6.



The master controller has to be set up for the attached AUX devices. This SL-84 is configured for two SL-870 terminals.

